

Onboarding



Rupeaks



Invest to Harvest



Learn The Basics

About the stock market investment.





Try Demo Trading

About the stock market investment.





Real-Time Price Quote

About the stock market investment.



Authentication

Log In



Login with Fingerprint



Login Manually



Login with Google



Login with Facebook

Don't have an account? [Register](#)



Log In

Hello Adil,

Use Touch ID to get started



Or Enter your 4-Digit Pin



Don't have an account? [Register](#)



Log In



Remember Me

[Forgot Password?](#)

Login



Login with Google



Login with Facebook

Don't have an account? [Register](#)



Sign in

Use your Google Account. [Learn more](#)

[Forgot email?](#)

[Create account](#)

Next



Français • हिन्दी • More...

Phone number or email address

Password

Log In

**Forgotten
password?**

OR

Create New Facebook Account



Sign Up



Sign Up



Sign Up with Google



Sign Up with Facebook

Already have an account? [Sign In](#)

Dashboard

Notice!

The values used in this application is for representational and experimental purpose only. These values do not represent the real values of the stock market.

I've understood

Hello Adil,



Returns

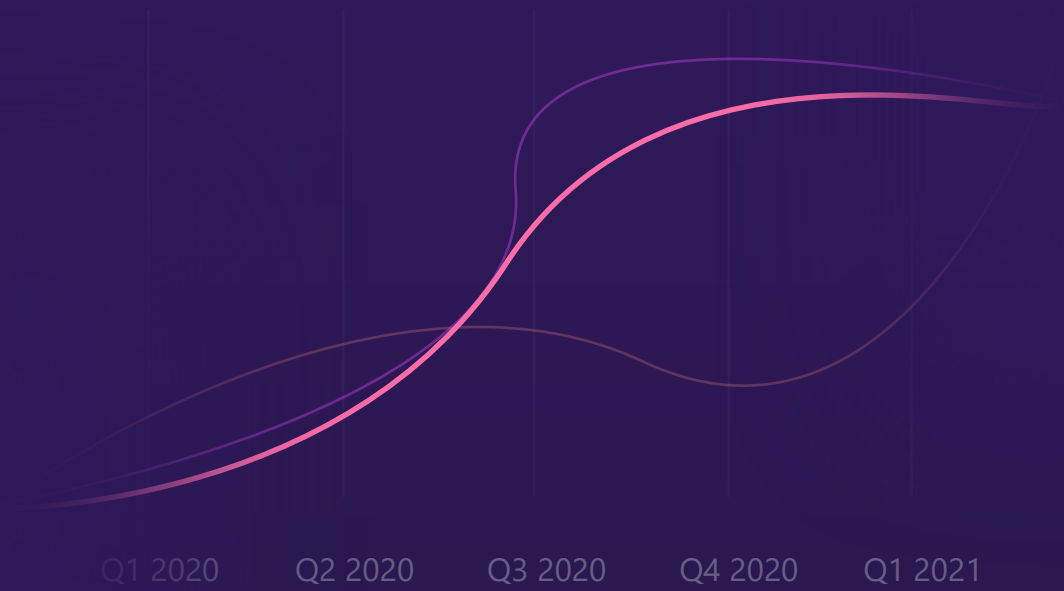
35.1 %

0.23%

Portfolio

Rs 275653

0.23%



YTD Change

Portfolio Value

MTD Change

Ticker	Amount	P&L(%)	Value(Rs)
AIRM	430	0.00	2,494
IBL	400	1.06	19,000
LOTO	50	2.23	413
MCPG	475	1.00	101,250

Dashboard



E-Learning

Discover

Learn to seed & seed to harvest



🔍 Search...



The Market Basics

35% Complete

01

Orders and Prices

35% Complete

02

Technical Analysis

35% Complete

03

Fundamental Analysis

35% Complete

04

Trading Psychology

35% Complete

05



E-Learning



Discover

Learn to seed & seed to harvest



🔍 Search...



The Market Basics 01

35% Complete

Orders a

35% Comple



E-Learning





The Market Basics

35% Complete



What is an investment?

An investment is an asset bought by an individual or organization with the expectation that it will generate some future income or profit—Examples of investments may include stocks and real estate

Next Courses



Skip

Next



E-Learning



Question 1/3

What is not an example of a financial investment?

Stock Trading

Cryptocurrency

Real Estate

Swimming pools

Check



E-Learning



Question 1/3

What is not an example of a financial investment?

Stock Trading

Cryptocurrency

Real Estate

Swimming pools

Next



E-Learning





UTDL position closed at Rs 64.00

Share to



Twitter
@adilramjon



Reddit
@adilramjon



Facebook
@adilramjon



Instagram
@adilramjon



Share

Discover

Learn to seed & seed to harvest



🔍 Search...



Course Title ✓

Completed

01



Chapter Title

35% Complete

02



Chapter Title

35% Complete

03



Chapter Title

35% Complete

04



Chapter Title

35% Complete

05



E-Learning



Live Stocks

Stocks



Search...



Air Mauritius
AIRM



Rs 5.80
▲ 0.35%



Bluelife
BLL



Rs 0.68
▲ 4.62%



Caudan
CAUD



Rs 1.00
● 0.00%



Ciel Group
CIEL



Rs 5.24
● 0.00%



Cim Financial
CIM



Rs 7.34
▼ 0.27%



ENL Group
ENLG



Rs 19.00
▼ 5.00%



Gamma Civic
GCL



Rs 39.90
▼ 0.23%



Harel Mallac
HML



Rs 40.00
● 0.00%



Live Stock



Stocks



Search...



Bluelife
BLL



Rs 0.68
▲ 4.62%



Air Mauritius
AIRM



Rs 5.80
▲ 0.35%



Rogers
ROGE



Rs 20.50
▲ 2.24%



Lottotech
LOTO



Rs 8.26
▲ 2.23%



IBL Group
IBLL



Rs 47.50
▲ 1.06%



United Docks
UTDL



Rs 64.00
▲ 0.00%



Sort by A-Z

Sort by loss

Sort by gain

Stock Tracker



Stock Tracker



Rogers

Rogers
ROGE

Rs 20.5

0.46 (2.24%)

1H

4H

1D

1W



5min

20min

25min

30min

35min

40min

45m

Market Cap

Rs 5.20 B

Shares issued

252 M

Revenue

Rs 16.8 B

Buy

Sell



Live Stock





Stock Tracker



MCB Group

MCBG

Rs 270

- 4.91 (- 1.82%)

1H

4H

1D

1W



1h

1h20

1h40

2h

2h20

2h40

3h

Market Cap

Rs 65.0B

Shares issued

239B

Revenue

Rs 13.4B

Buy

Sell



Live Stock





Stock Tracker



Caudan

CAUD

Rs 1.00

0.00 (0.00 %)

1H

4H

1D

1W



4h

6h

8h

10h

12h

14h

16h

Market Cap

Rs 2.00 B

Shares issued

2.00 B

Revenue

Rs 490M

Buy

Sell



Live Stock





Stock Tracker



Gamma

Gamma Civic

GCL

Rs 39.9

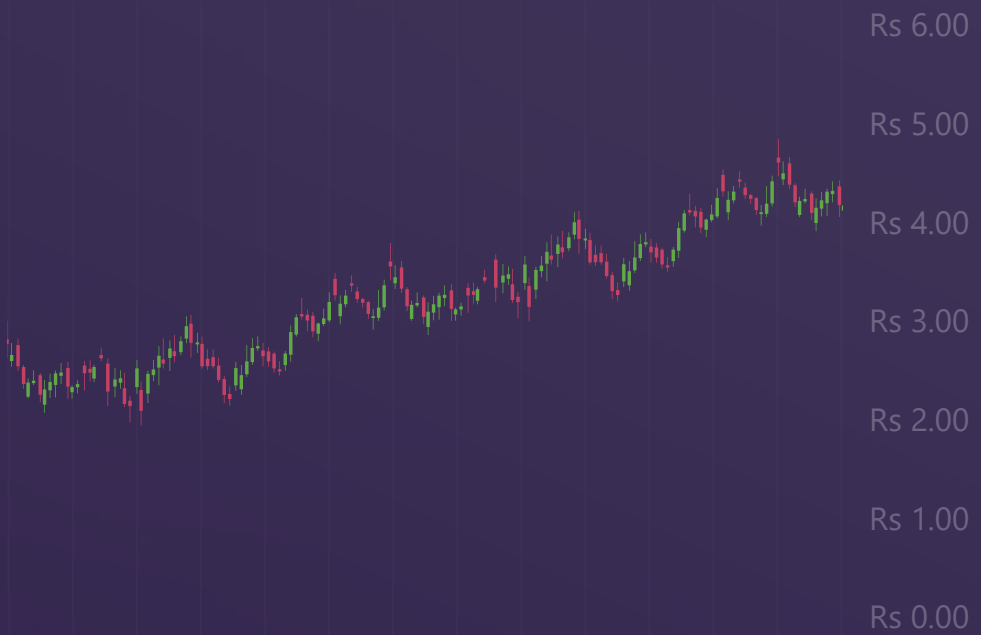
-0.10 (- 0.25%)

1H

4H

1D

1W



Vednesday Thursday Friday Monday Tuesday Wedne

Market Cap

Rs 5.30 B

Shares issued

133 M

Revenue

Rs 7.00 B

Buy

Sell



Live Stock



Leaderboard



Leaderboard



Hello Adil,

Rs 275,653

Rank

Investor Name

Portfolio

1st



Samuel Priestley

Rs 13,550,659

2nd



Jolene Strawn

Rs 11,490,506

3rd



Kathryn Skidmore

Rs 8,270,950

4th



James Buchanan

Rs 7,930,342

5th



Guadalupe Reed

Rs 7,660,833

6th



Louis Lee

Rs 5,160,326

7th



Donald Faulkner

Rs 3,720,182

8th



Shara Gaya

Rs 1,550,422

9th



Thomas Donohue

Rs 950,627

10th



Joanne Marsh

Rs 622,310



Leaderboard



Open Trade



Open Trade



Air Mauritius

Sell

AIRM

Rs 64.00

0.00 (- 0.00 %)

Set Rate



At Market



Set Units



32.00



No SL

Stop Loss

No TP

Take Profit

Amount



80.00



125% of the position amount

Note: Your trade will be executed once the market opens

Set Order

Cancel



Live Stock





Open Trade



Air Mauritius

Sell

AIRM

Rs 64.00

0.00 (- 0.00 %)

Set Rate



At Market



Set Units



32.00



No SL

Stop Loss

No TP

Take Profit

Amount



80.00



125% of the position amount

Note: Your trade will be executed once the market opens

Set Order

Cancel



Live Stock





Open Trade



Air Mauritius

Buy

AIRM

Rs 64.00

0.00 (- 0.00 %)

Set Rate



At Market



Set Units



32.00



No SL

Stop Loss

No TP

Take Profit

Amount



80.00



125% of the position amount

Note: Your trade will be executed once the market opens

Set Order

Cancel



Live Stock





Open Trade



Air Mauritius

Buy AIRM

Rs 64.00

0.00 (- 0.00%)

Set Rate

- At Market +

Set Units

- 32.00 +

No SL
Stop Loss

No TP
Take Profit

Note: Your trade will be executed once the market opens

Set Order

Cancel



Live Stock





Order Received

Edit Trade



Edit Trade



United Docks

Buy

UTDL

Rs 64.00

0.00 (- 0.00%)

Invested

Rs 96,000

1,500 Units

Open

Rs 55.00

21/12/2021 21:30

Current P/L

+Rs 13,500

+16.4%

No SL

Stop Loss

No TP

Take Profit

Amount

-

80.00

+

125% of the position amount

Update

Close Trade



Live Stock





Edit Trade



Air Mauritius

Sell

AIRM

Rs 64.00

0.00 (- 0.00%)

Invested

Rs 96,000

1,500 Units

Open

Rs 55.00

21/12/2021 21:30

Current P/L

+Rs 13,500

+16.4%

No SL

Stop Loss

No TP

Take Profit

Amount

-

32.00

+

125% of the position amount

Update

Close Trade



Live Stock





Updated

Close Trade



Edit Trade



United Docks

Buy

UTDL

Rs 64.00

0.00 (- 0.00 %)

Amount

Rs 96,000

1,500 Units

Open

Rs 55.00

21/12/2021 21:30

Current P/L

+Rs 13,500

+16.4%

Close only part of trade

Note: Your close order will be executed once the market opens

Close Trade



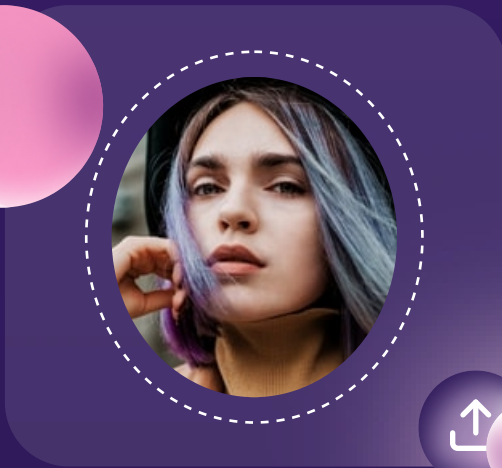
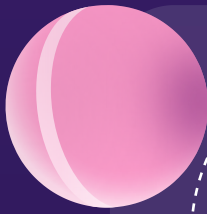
Live Stock





UTDL position closed at Rs 64.00

Account Settings



Joined on 24 June 21


Adil Ramjon

Name

Gender

Age

Email








Password 

Save



Settings

< Settings

-  Language English 
-  Notifications
-  User Settings 
-  Help 

Save



Settings

< Settings



Language

English



- ✓ English
- Estonian
- Finnish
- Flemish
- French
- Georgian
- German



Notifications



User Settings



Help



Save



Settings

Messages

 RUPEAKS

1m ago 

MCB DOWN TODAY

 MCB is down 3.0% to Rs 261.9 today.

 RUPEAKS

1m ago 


LOTTO DOWN TODAY

 LOTTO is down 10% to Rs 7.43 today.

 RUPEAKS

2m ago 

NRL UP TODAY

 NRL is up 5% to Rs 33.1 today.


 RUPEAKS

2m ago 

HML UP TODAY

 HML is up 7% to Rs 42.8 today.

 RUPEAKS

3m ago 

ROGE DOWN TODAY

 ROGE is down 4% to Rs 19.2 today.

 RUPEAKS

3m ago 

UTDL Earning Coming Up

UTDL announces earning today after market close.

 RUPEAKS

4m ago 



9:41

Monday, June 22

 RUPEAKS

NOW

CAUD UP TODAY

CAUD is up 12% to Rs 12.12.

 RUPEAKS

1M AGO

UTDL Earning Coming Up

UTDL announces earning today after market close.

 RUPEAKS

2M AGO

BLL UP TODAY

BLL is up 50% to Rs 1.02.

